



Dandenong Ranges Bushfire Landscape Project

Guidelines for Fuel Management Planning

Steve Pascoe
Project Coordinator

**Working in conjunction
with Communities,
Government, Agencies
and Business**

Community Focussed Fuel Management Planning

- Concept of 'Safer Centres' - focused on safety of people and sustainability of towns
- Tenure blind, risk based – private and public land
- Community focused, community led, collaborative
- Recognises and enables protection of local assets and values
- Respects and builds local knowledge, ownership and capacity
- Operates within and enhances existing planning systems
- Shared responsibility = shared knowledge + shared resources + shared power
- Focus on protection of township may reduce impact on public land – win/win

Fuel Management Zones

- **Asset Protection Zones**

- Highest level of protection to settlements and assets, intense fuel management, high frequency, significant impact on ecological values. Priority is safety.

- **Bushfire Moderation Zones**

- Support APZ, reduce fire intensity in the landscape, reduce embers, priority is on safety but with more consideration of ecology.

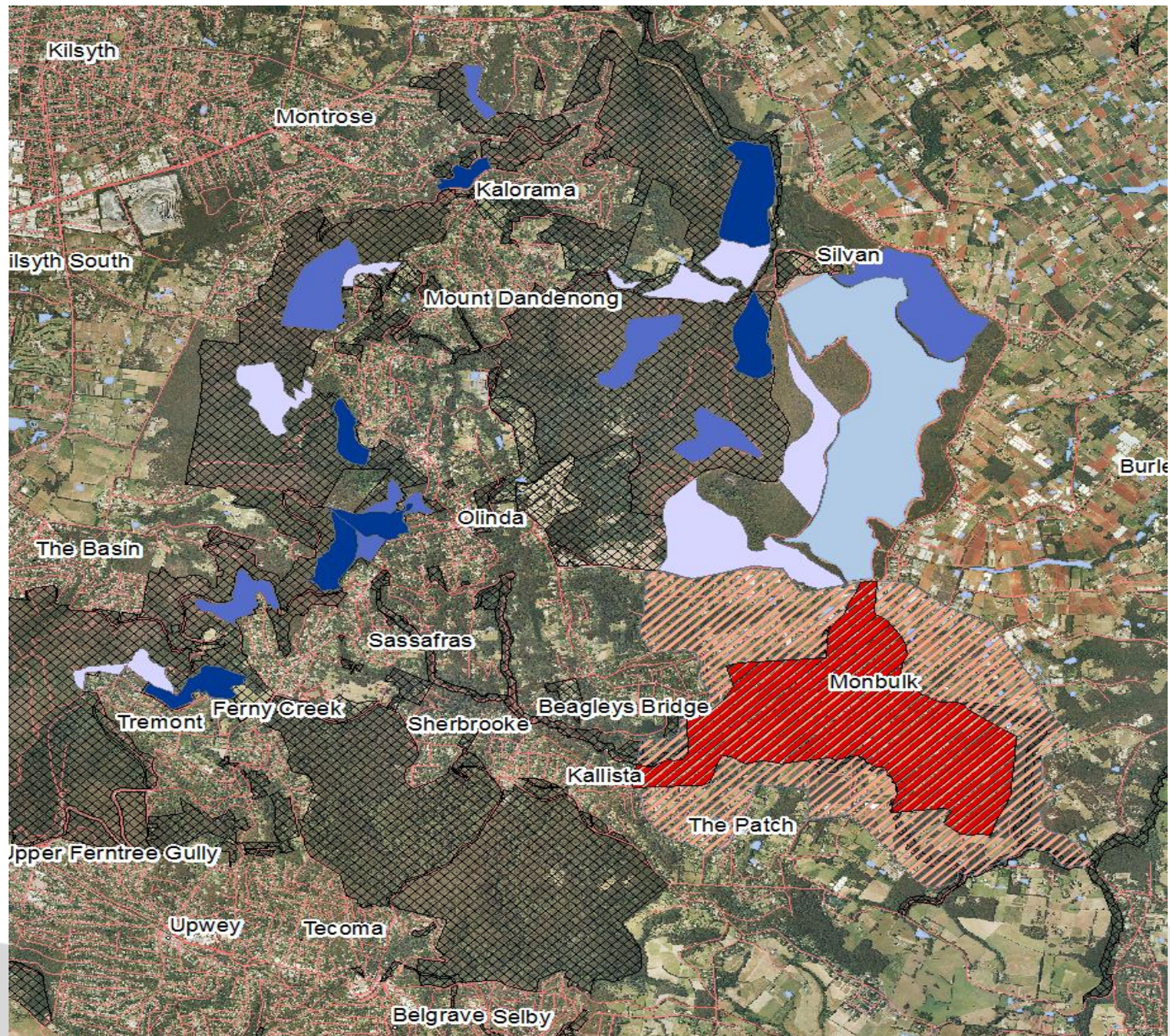
- **Fuel Management Exclusion Zones**

- Identifies areas of high ecological or cultural value where fuel management should be excluded.
- Includes areas not available for fuel management – wet gullies, steep areas
- Vegetation can still be managed, but fire safety not priority

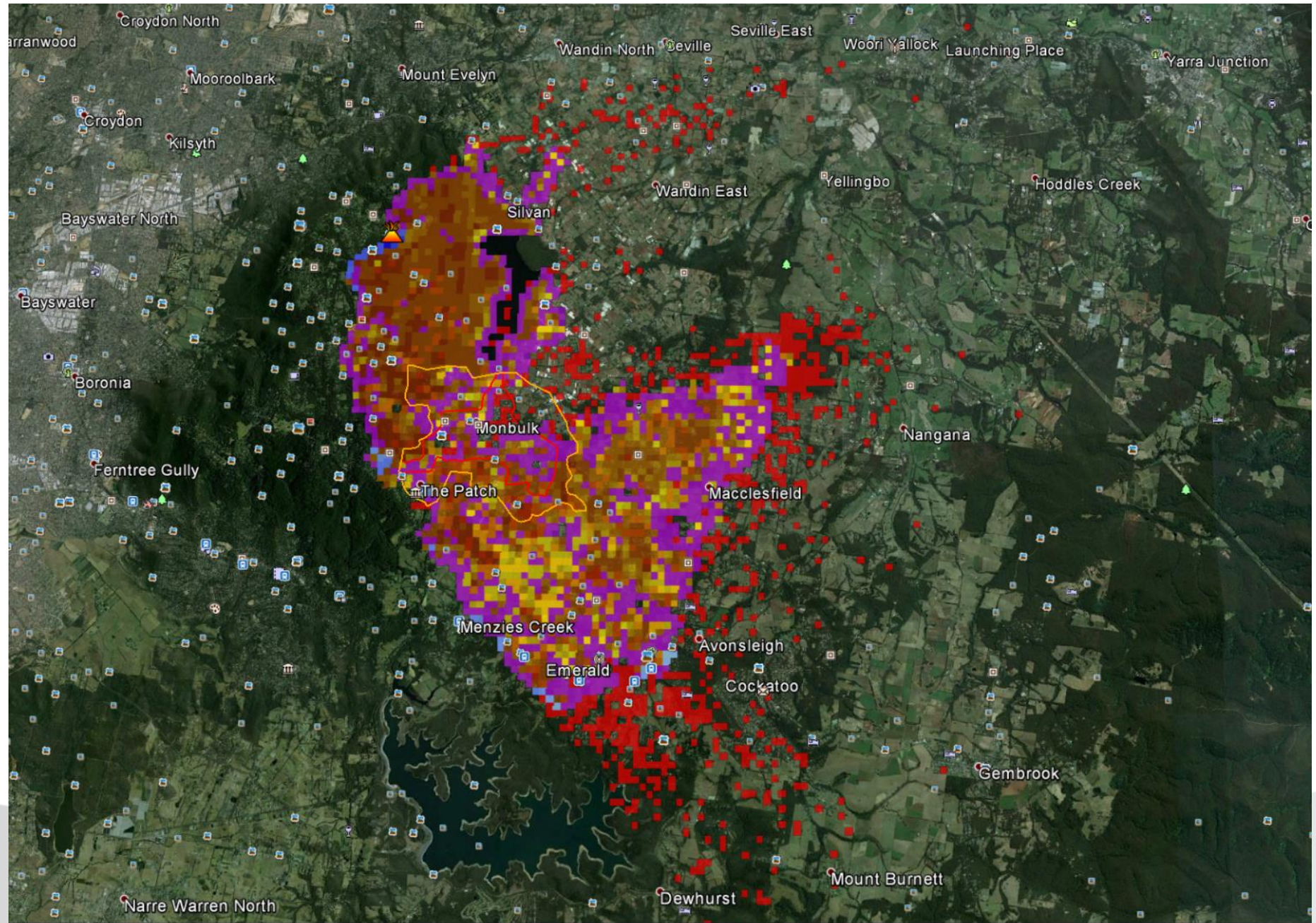
- **Landscape Management Zones**

- All other areas
- Fuel management for ecological outcomes

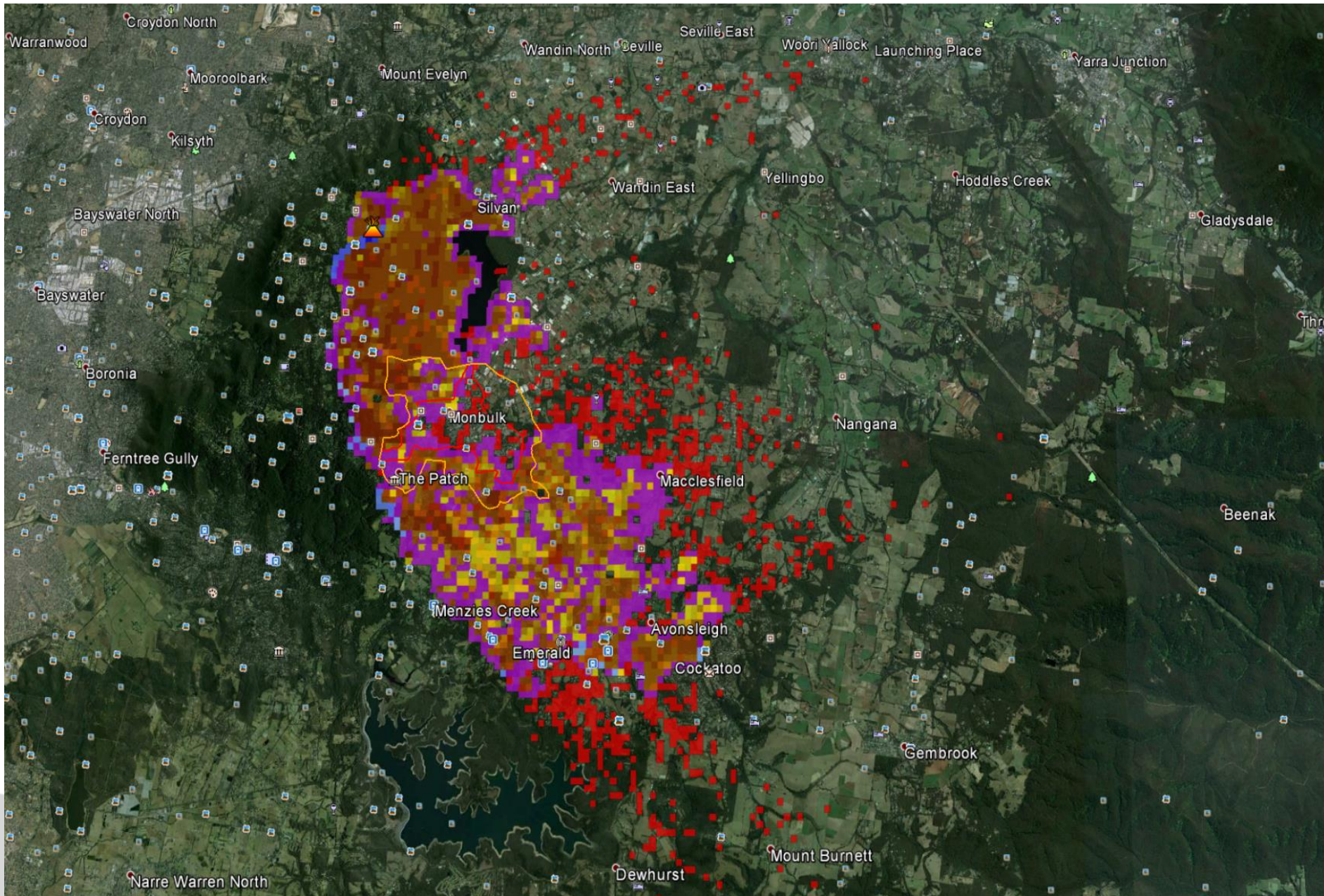
FOPs and Monbulk FMZs



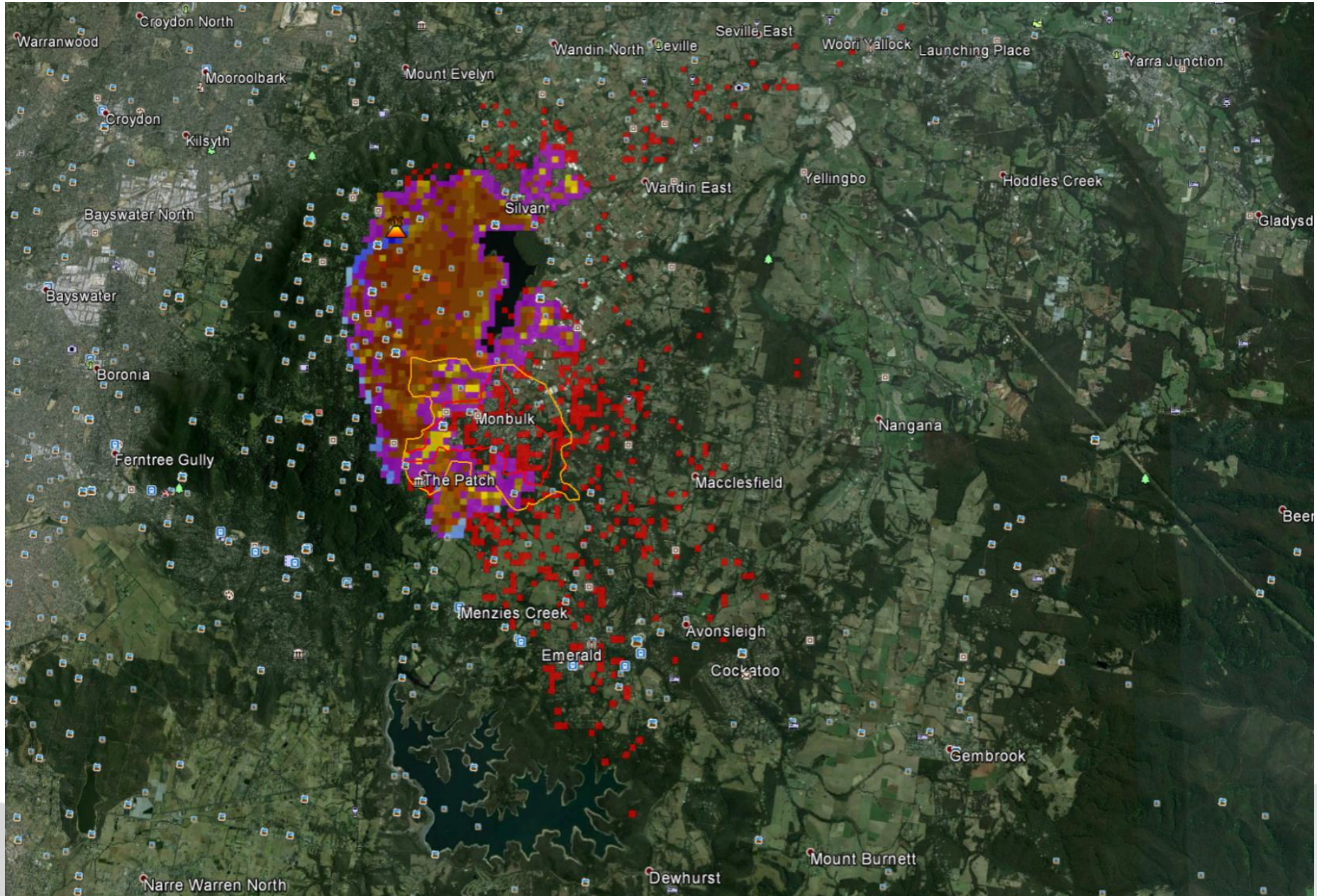
Monbulk – no fuel modification



Monbulk – Fire Operations Plan

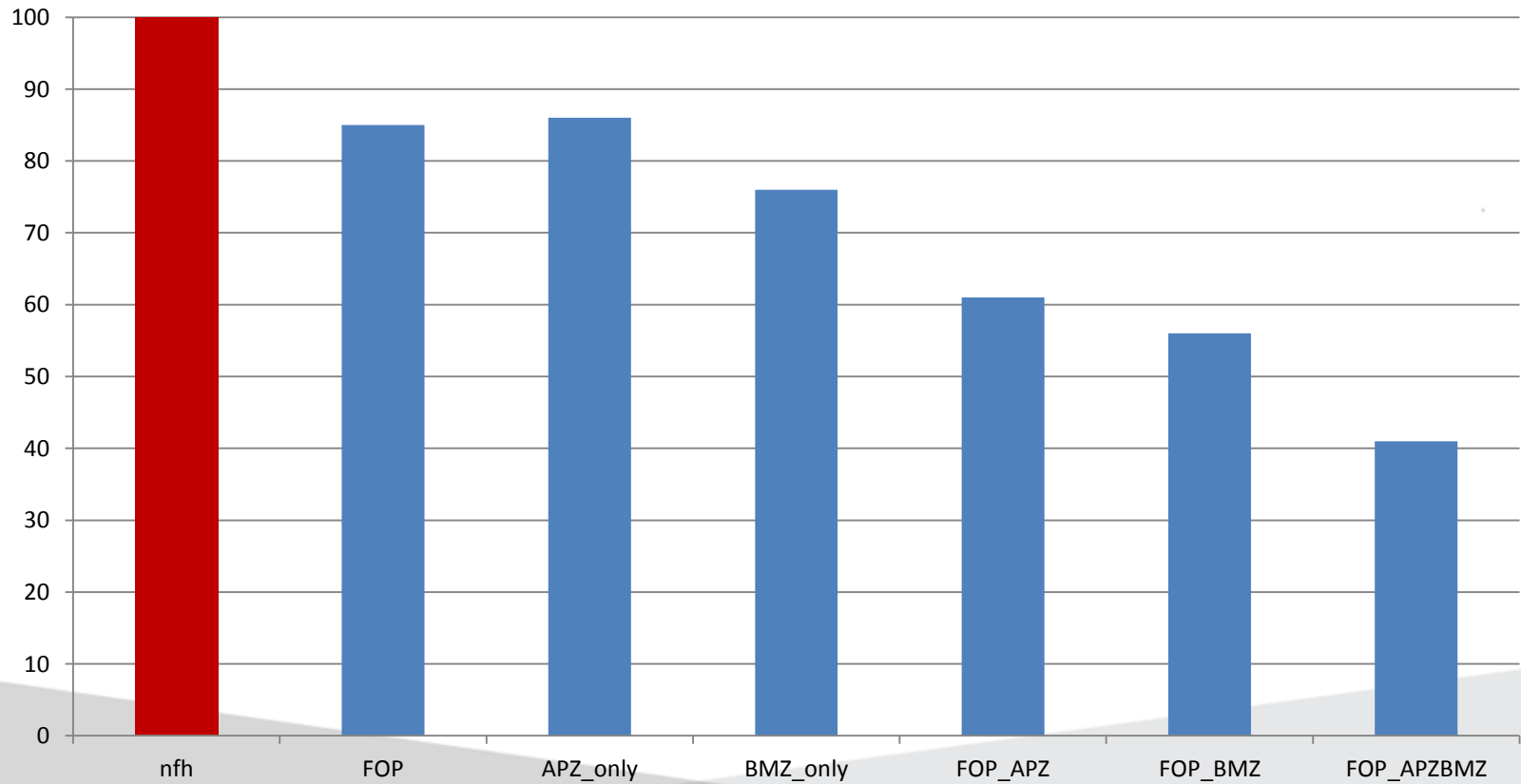


Monbulk – FOPs + APZ + BMZ



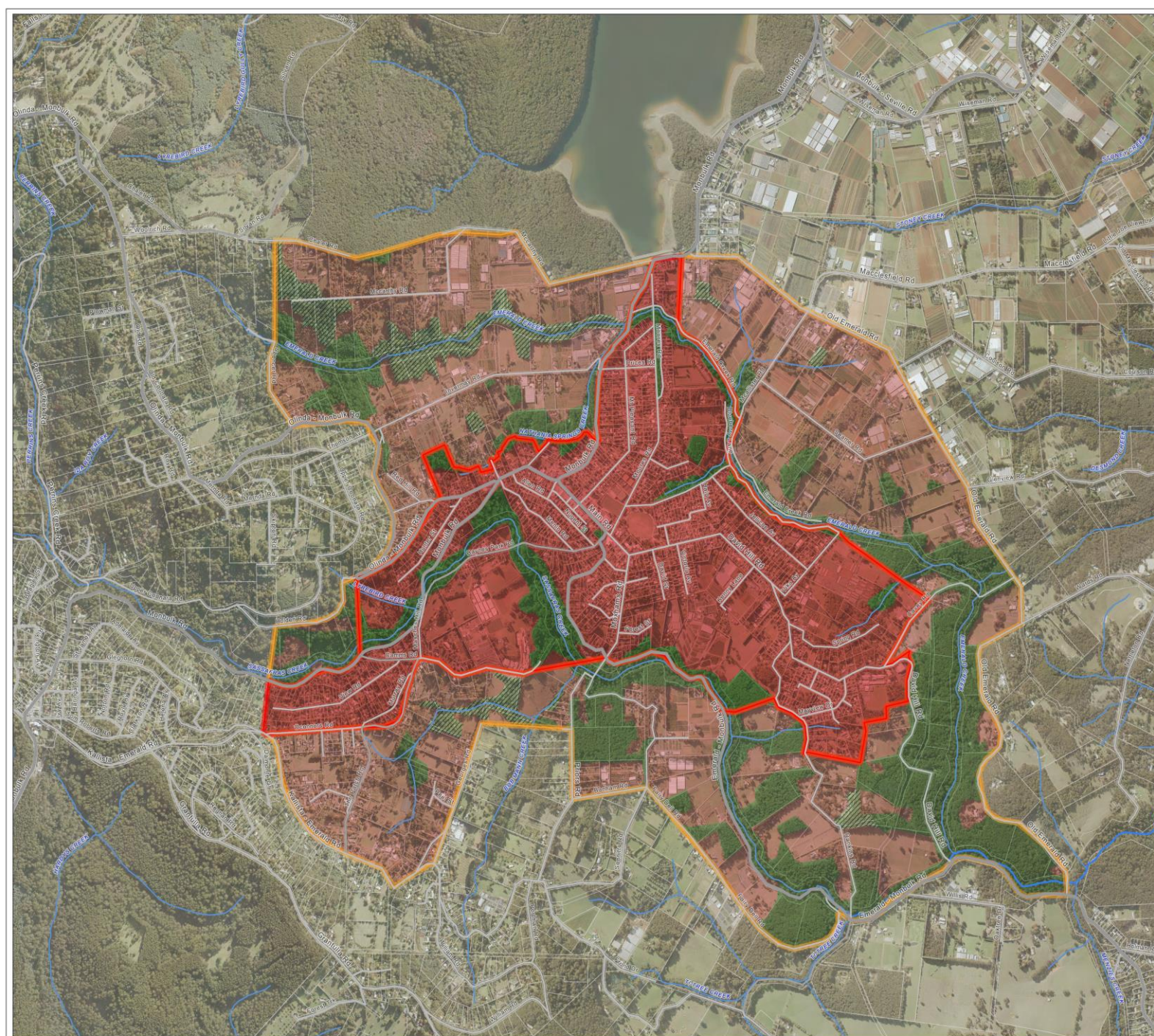


Monbulk locality FFDI 75



MONBULK TOWNSHIP

ASSET PROTECTION & BIODIVERSITY MANAGEMENT



Legend

- Arterial Road
- Sub Arterial Road
- Collector Road
- Local Road
- Secondary Watercourse
- Tertiary Watercourse
- Asset Protection Zone - APZ
- Bustfire Moderation Zone - BMZ
- APZ - Treat OK
- APZ - Exclusion (EVC)
- BMZ - Treat OK
- BMZ - Exclusion (EVC)
- BMZ - Further Investigation
- Property Boundary



0 0.5 1 km

There is no guarantee to the accuracy of the information on this map. Any person using or relying upon such information does so on the basis that the provider shall bear no responsibility or liability whatsoever for any errors, faults, omissions or variations on this map.

Aerial imagery captured 26 Apr 2016
Map scale 1:1000 (G.A.)
Map last updated 04 Nov 2016
Datum: GDA94 MGA Zone 55

Identifying and protecting high value ecological assets (FMEZ)

- No suitable existing methodology
- New approach developed by SYR

Using high resolution aerial photography, in the APZ/BMZ area:

- map areas that are clearly “no ecological value”
- map areas that are clearly, or from local knowledge, high ecological value
- map areas that are uncertain

With local knowledge holders:

- consider and refine the boundaries of the above.
- ground truth the ‘uncertain’ areas, and move them one way or the other.

Finalise FMEZ mapping