

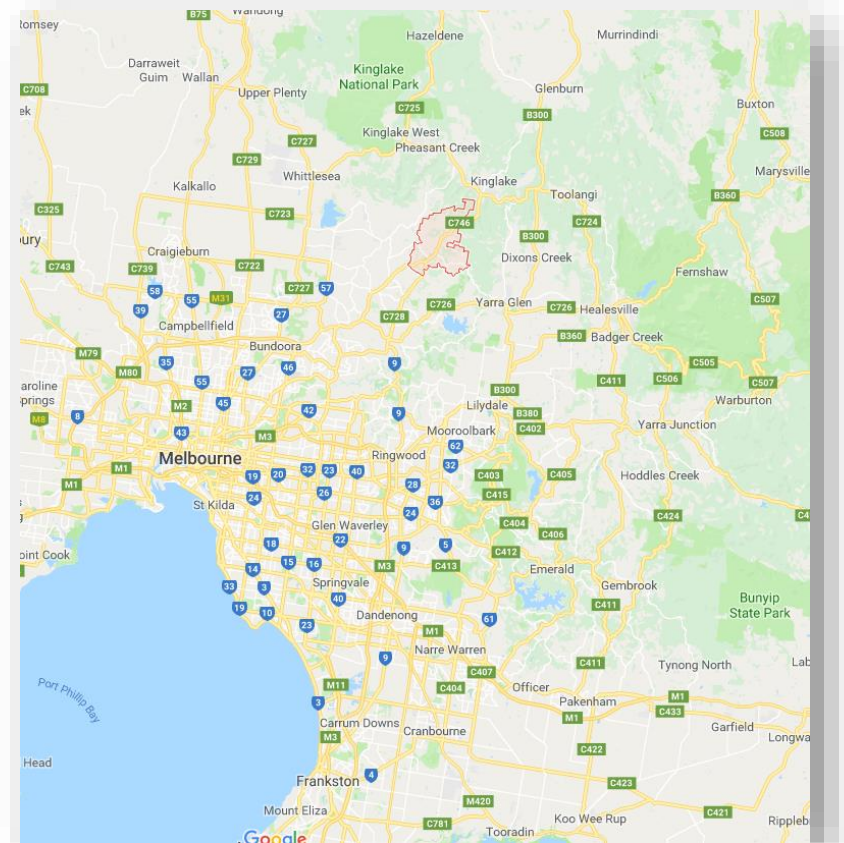
The St Andrews Conversations

Matt Campbell
DELWP

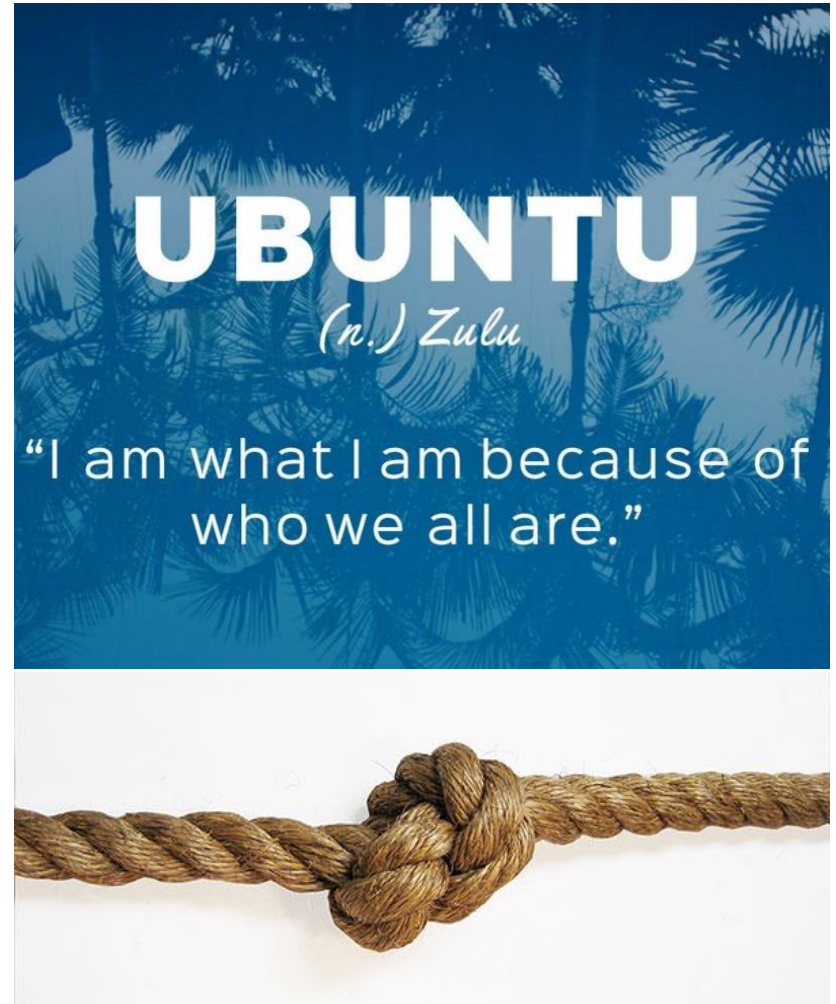


St Andrews

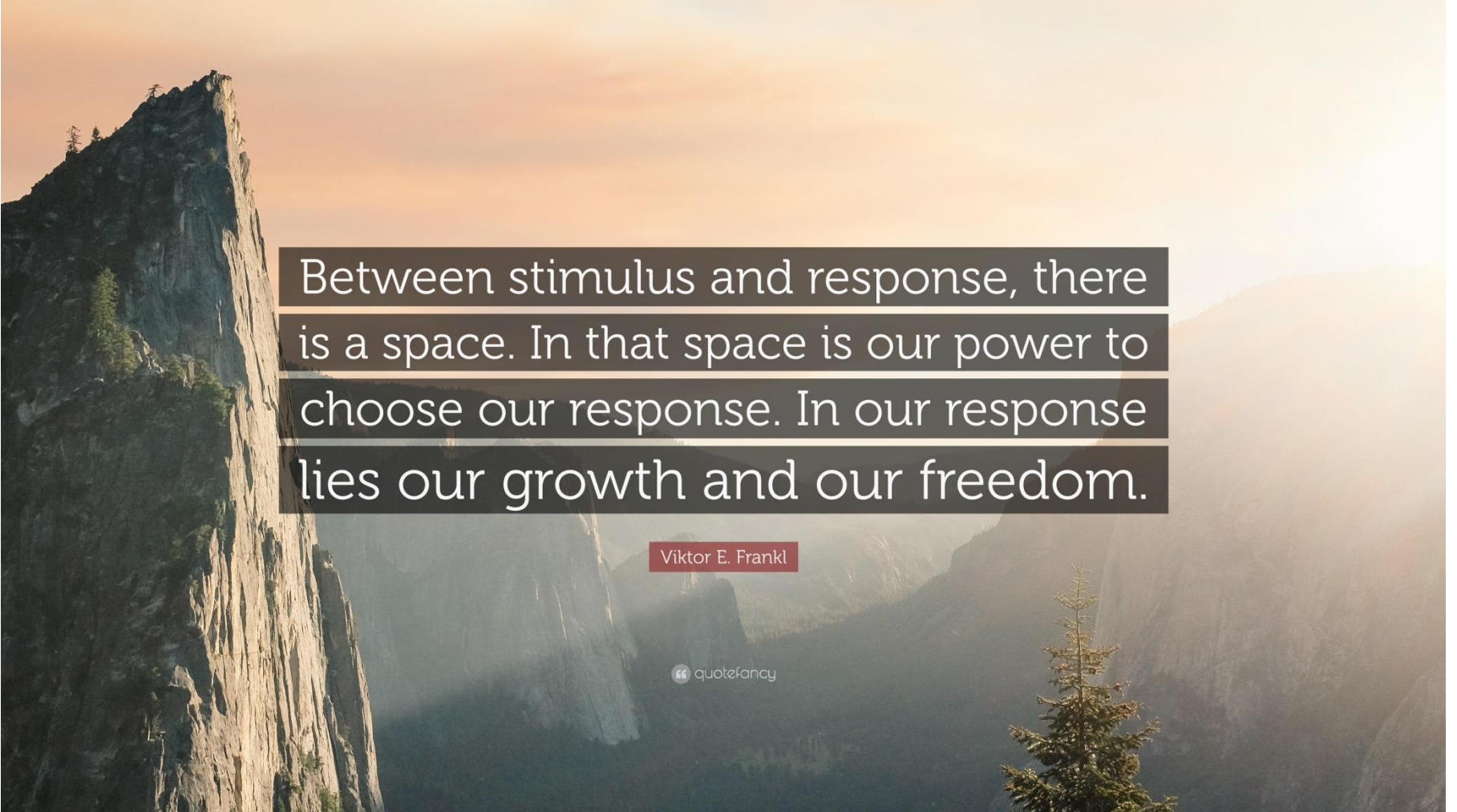
“You’re not a part of us... if you want to understand and work with the community you have to walk alongside us, be a part of us.”



Hardwired for CONNECTION



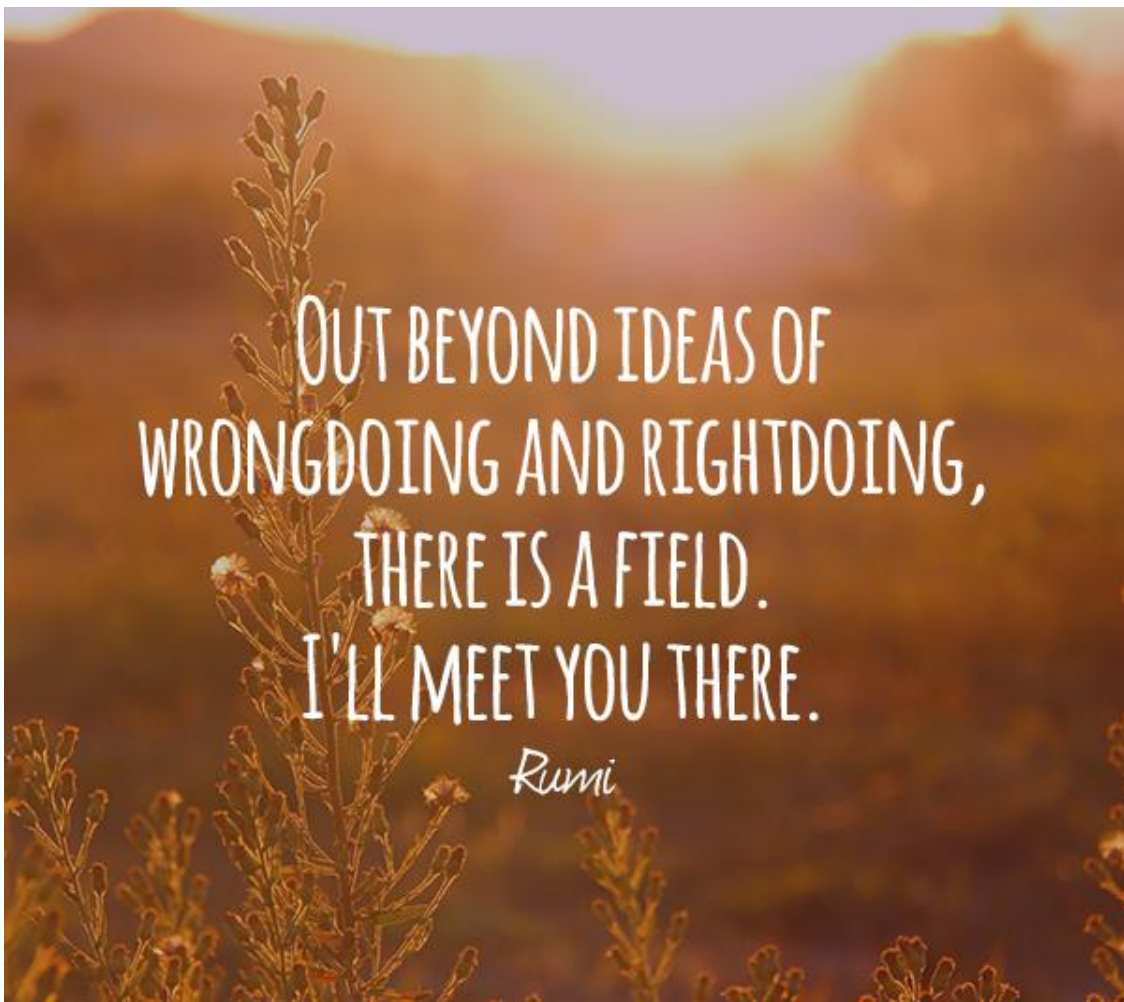
Space to make sense

A scenic view of a mountain peak, likely El Capitan in Yosemite National Park, with a quote overlaid. The image shows a steep, rocky cliff face on the left, with a few small trees growing on it. The background is a hazy, sunlit valley with more mountains in the distance. The sky is a warm, orange-brown color, suggesting sunrise or sunset. The quote is centered in the middle of the image, overlaid on a dark, semi-transparent background.

Between stimulus and response, there is a space. In that space is our power to choose our response. In our response lies our growth and our freedom.

Viktor E. Frankl

“ quotzfancy

A warm, golden-hour landscape with mountains in the background and a plant in the foreground. The text is overlaid on the image.

OUT BEYOND IDEAS OF
WRONGDOING AND RIGHTDOING,
THERE IS A FIELD.
I'LL MEET YOU THERE.

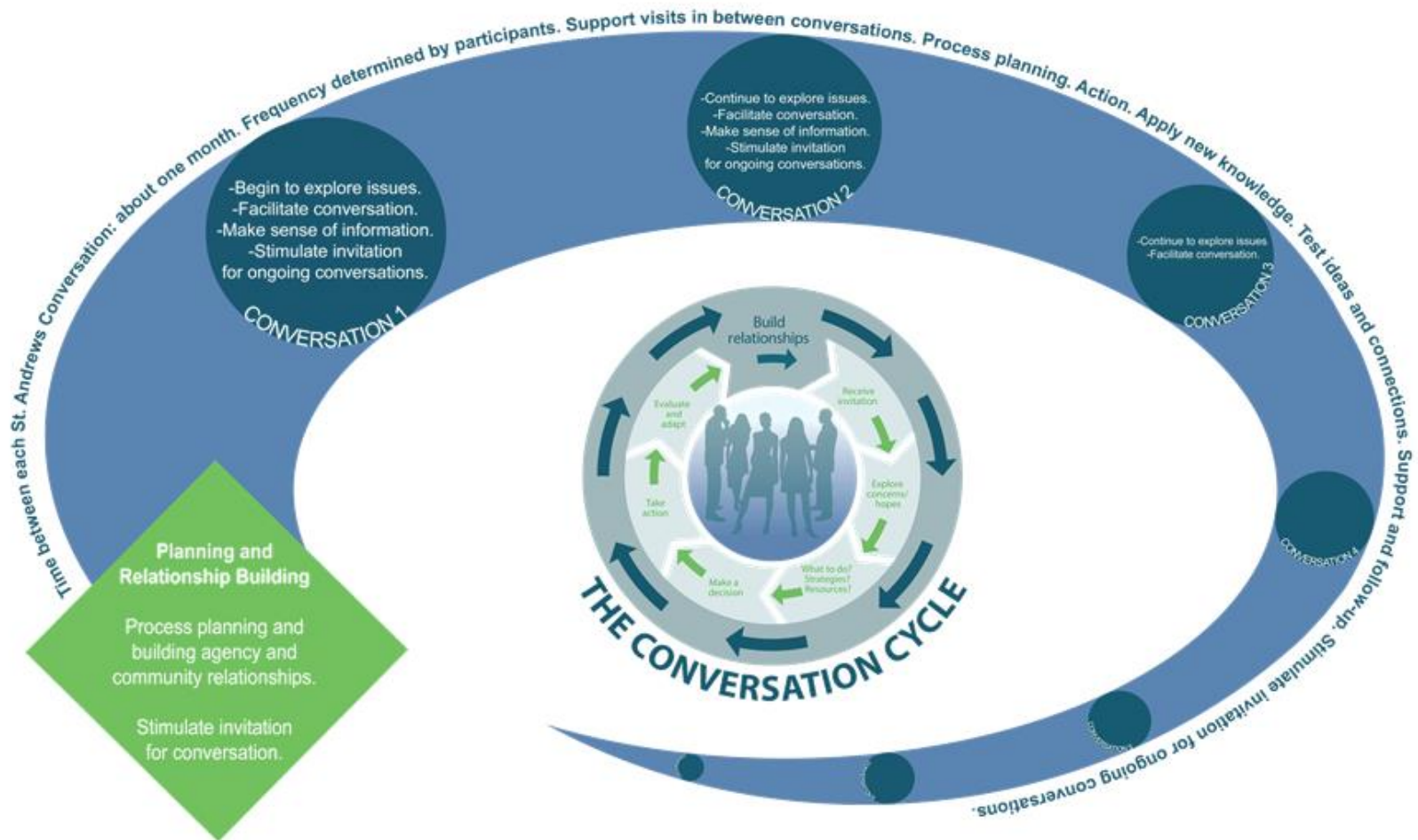
Rumi

**We
meet in
dialogue**

How can Government contribute?



Process design

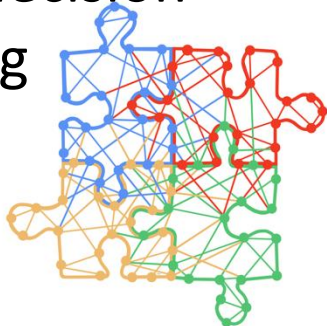


Principles

Work by invitation



Focus on
learning rather
than decision-
making

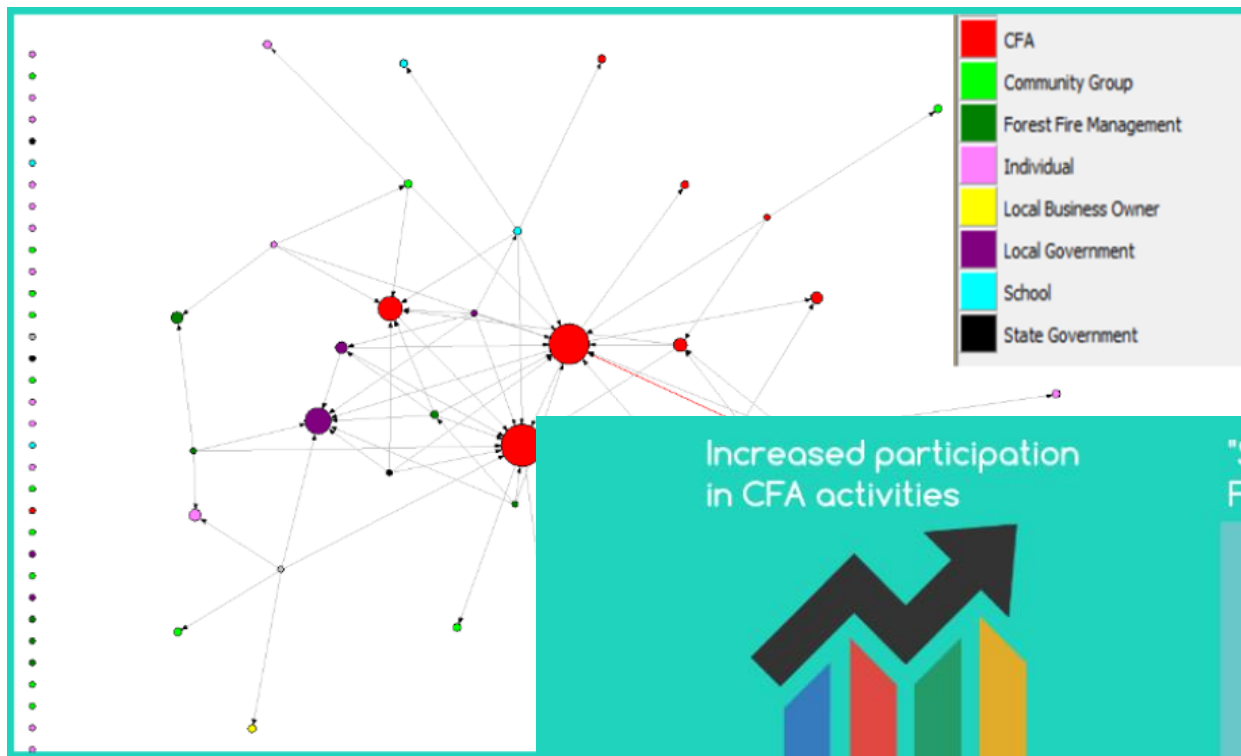


Meet as people
before you
meet as
stakeholders



Play the long game





Increased participation
in CFA activities



"St Andrews Stuff"
Facebook page



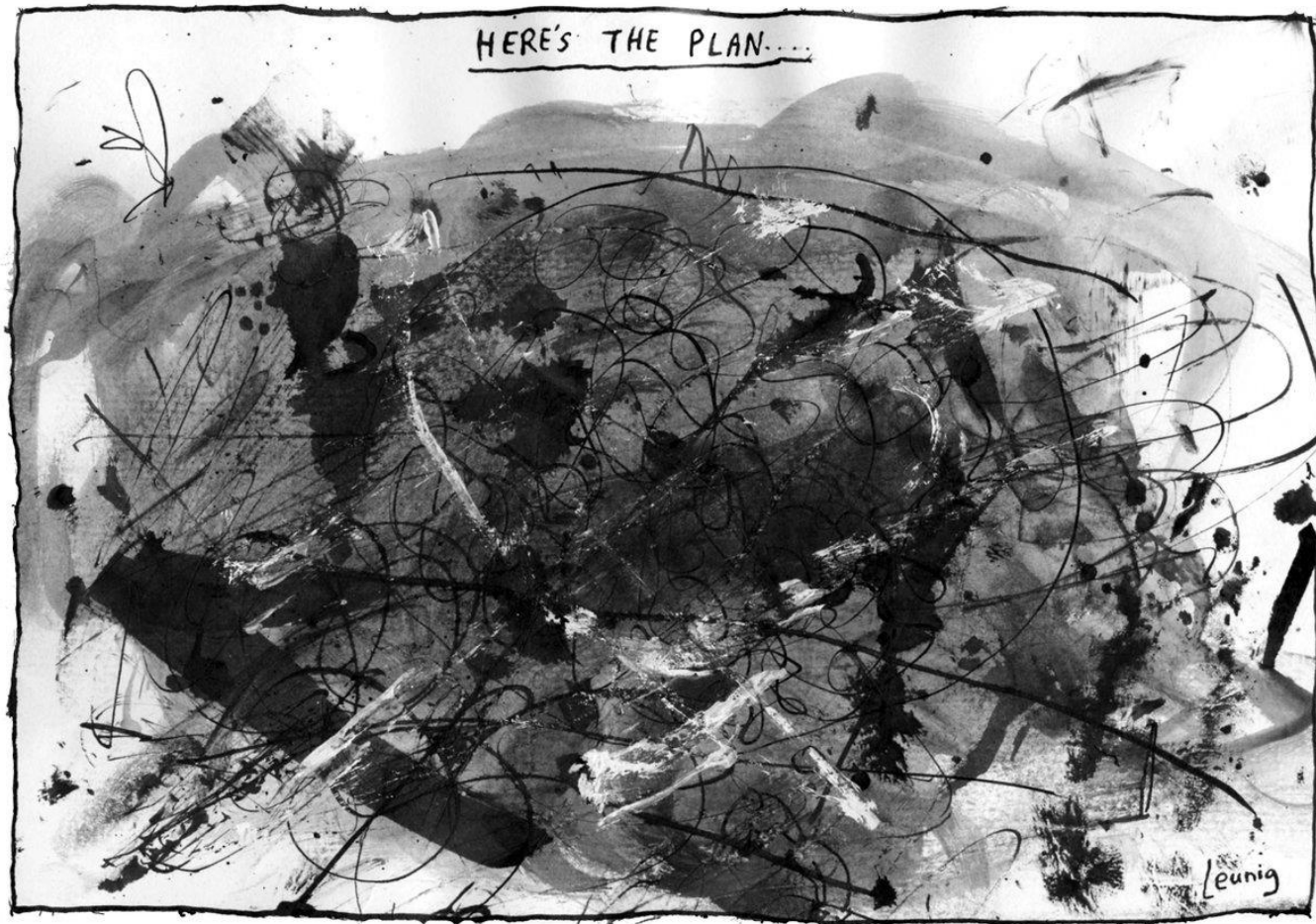
Cross-tenure fuel
management



Community-based "team"



<https://m.youtube.com/watch?v=H8TXu3LBF4M&t=5s>



matthew.campbell@delwp.vic.gov.au